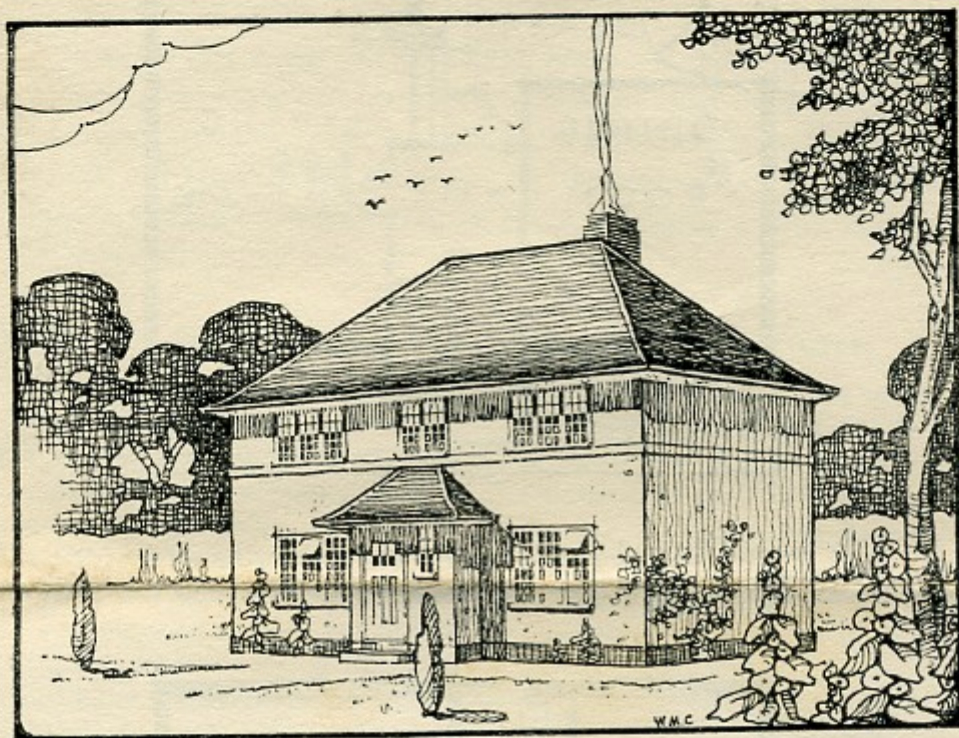


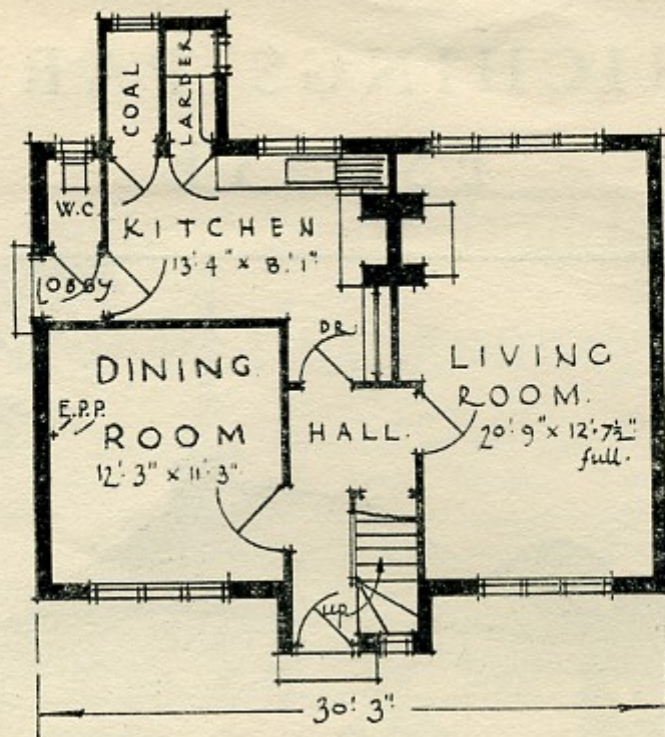
RICHINGS PARK ESTATE



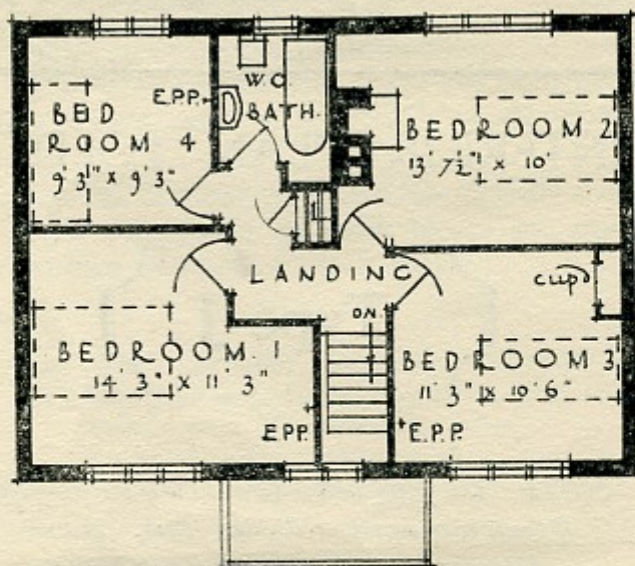
INTERIOR PLAN FOLDER

{ Type J }

*NOTE : This folder deals with only one of the many types
of houses being erected at Richings Park. Similar
folders for other types will be sent on application
to Richings Park Estate, Iwer, Bucks.*



The ground floor plan of the J type house showing total width.



The first floor plan.

(These designs are the copyright of The Richings Park Estate, Limited.)

The total cost of this house is £2 - 6 - 0 per week

FORTY-SIX shillings a week for twenty years and three months—*that is all you have to pay for this freehold house.* There is no deposit—the usual preliminary costs such as legal fees and road charges are covered in this weekly payment. The wire fencing at sides and rear, and a block-built front wall and gate, are also included. By the payment of an additional few shillings a week the purchaser can be specially insured so that in the event of his death all further instalments are cancelled.

Business Arrangements

The "No Deposit" system is open only to approved purchasers—that is to say, those who can give satisfactory references from employers, banks or other responsible parties as to their standing. As an additional safeguard the prospective occupant pays £5 in cash when he selects his plot. This is simply to prevent frivolous applications and to cover the cost of references, so essential to preserving the character of the estate. In special cases the Company is prepared to consider a readjustment of instalments on a rising scale instead of at a flat rate throughout.

The Accommodation

A large living room nearly 21 ft. long occupies the whole of one end of the house, the room being lit from both ends. This provides ample space for entertaining one's friends. The dining room, situated on the other side of the hall, is more compact and being intended mainly for meals is provided with a point for an electric fire and not a full fireplace.

Three large and one small bedrooms are provided on the first floor. The square type of house permits the maximum amount of space and convenience.

INCLUDED with this house are the following fittings: complete wireless equipment, electric towel rail in the bathroom, electric cooker and electric copper in the kitchen and two electric radiators.

**RICHINGS PARK ESTATE
LIMITED,
IVER · BUCKS**

A principle of building new in this country

*"Phormium
cavity build-
ing blocks."*

" The houses themselves are constructed of 'Phormium' interlocking cavity blocks. These blocks are manufactured from Leicestershire marl—the best brickmaking material in the country. Each block is passed through two dies under very high pressure, thus producing a block with a minimum of porosity and a maximum of hardness. The blocks themselves are hollow, containing a centre of still air. In consequence they have an insulating value much greater than has the same thickness of solid brick. Equability of temperature is thus maintained indoors—warm in winter and cool in summer. Unlike the ordinary brick-built house, which takes some months to 'dry out,' the Phormium block house is dry from the time it is decorated. Furthermore, the interlocking principle and the size of the blocks makes it possible for the houses to be erected in much shorter time.

Finally, the Ministry of Health has officially stated that walls constructed of these blocks are much stronger than are those of 9-inch brick."

*Reprinted from "HOUSES WITHOUT DEPOSIT,"
the booklet issued by the Richings Park Estate, Ltd.,
descriptive of the Estate, the houses thereon,
and the method of purchase by the
"No Deposit" system.*